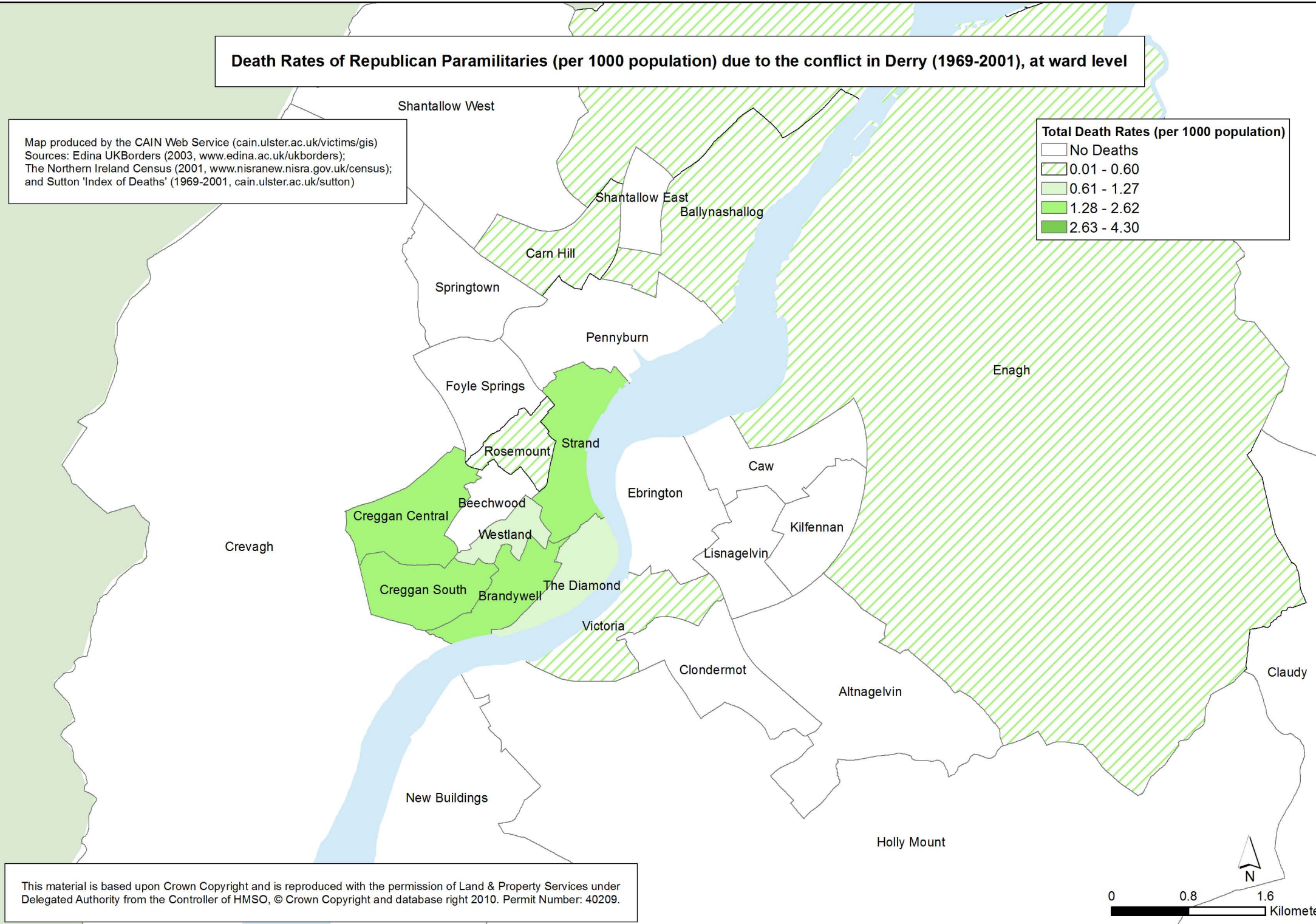
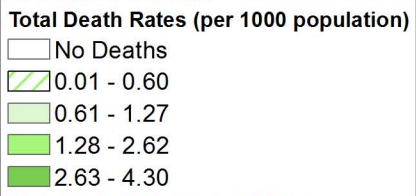


Death Rates of Republican Paramilitaries (per 1000 population) due to the conflict in Derry (1969-2001), at ward level

Map produced by the CAIN Web Service (cain.ulster.ac.uk/victims/gis)
 Sources: Edina UKBorders (2003, www.edina.ac.uk/ukborders);
 The Northern Ireland Census (2001, www.nisra.new.nisra.gov.uk/census);
 and Sutton 'Index of Deaths' (1969-2001, cain.ulster.ac.uk/sutton)



This material is based upon Crown Copyright and is reproduced with the permission of Land & Property Services under Delegated Authority from the Controller of HMSO, © Crown Copyright and database right 2010. Permit Number: 40209.

